



Viron Indoor Heater Conversion

ASTRALPOOL 

INSTALLATION INSTRUCTIONS



Melbourne: 03 8796 8600
Sydney Nth: 02 9853 2100
Brisbane: 07 3308 5400

Gold Coast: 07 5552 2600
Sydney Sth: 02 8778 9500
Adelaide: 08 8152 7600

Perth: 08 9350 2600
Townsville: 07 4796 0100
sales@astralpool.com.au
www.astralpool.com.au

A division of
FLUIDRA


The Viron Indoor Conversion Kit is designed to allow a Viron heater to be installed within enclosed spaces. Please ensure that adequate ventilation is provided to the plant room / enclosure to meet local and national requirements based on AS5601 and other relevant standards / regulations.

This conversion should only be performed by qualified persons.

Note:

The appliance is not intended for use by young children or infirm person without supervision. Please ensure that young children are supervised to ensure that they do not play with the appliance.

COMPONENTS INCLUDED

1 x Indoor Flue Outlet
1 x Pressure Switch
2 x Hose Clamps
1 x Pressure Switch Hose
1 x Pressure Switch to Hi Limit White wire
1 x Indoor Clearance Description Label
1 x Indoor Installation Description Label

INSTALLATION

1. Remove upper and lower side panels from Viron heater on the water connection side.



Fig. 1



Fig. 2

2. Remove top molded cover.
3. Remove plastic outer flue covers from rear of heater by sliding each section upwards before lifting away from heater. (Ensure you take caution not to damage locating tabs on covers)



Fig. 3

4. Remove screws holding cast outdoor flue top to the heater and lift off the flue pipe.
5. Remove flue pipe from flue outlet base in heater.

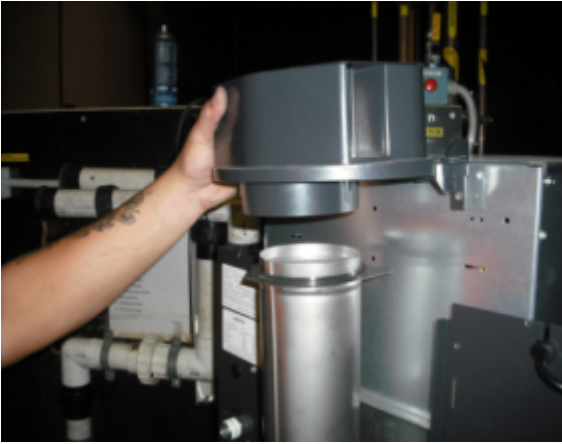
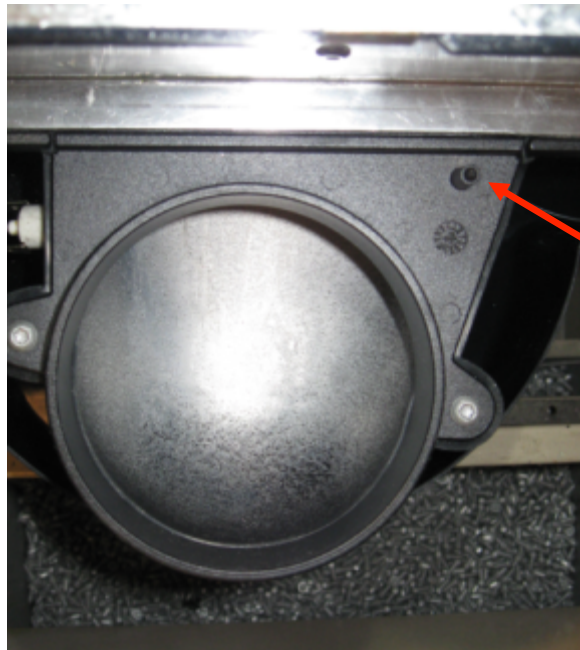


Fig. 4



Fig. 5

6. Using a 4mm bit, drill a hole in the centre of the nipple located on the cast flue outlet (see fig 7)



Pressure switch nipple

Fig. 6

7. Fit the pressure switch supplied to the nipple previously drilled out in step 6. Ensure the tubing on the switch is connected to the outlet marked "H" (see fig. 7)

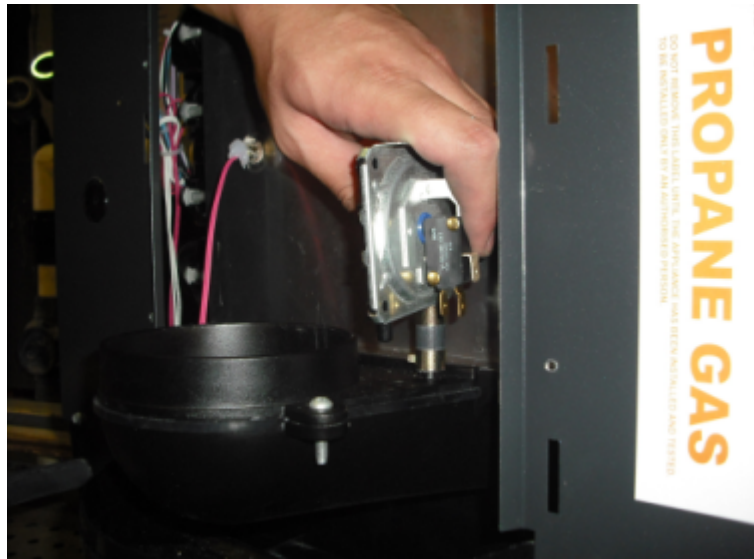


Fig. 7

8. Remove one of the white wires connected to the hi limit switch mounted onto the cast flue outlet. Connect this wire to the top terminal on the pressure switch installed (see fig. 8 & 9)

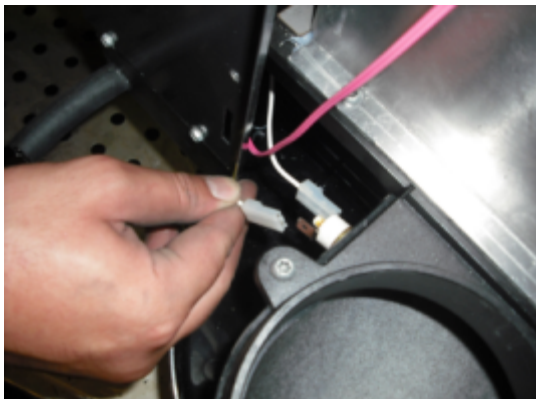


Fig. 8



Fig. 9

9. Using the white wire supplied with the conversion kit, connect to the middle terminal on the pressure switch and to the empty terminal on the hi limit switch.

10. Remove and dispose of the rubber gasket from the top of the flue pipe.
11. Fit the flue pipe into the bottom of the indoor flue outlet supplied with this kit. Ensure you align the flue pipe seam with the notch in the flue outlet. (see fig. 10 & 11)

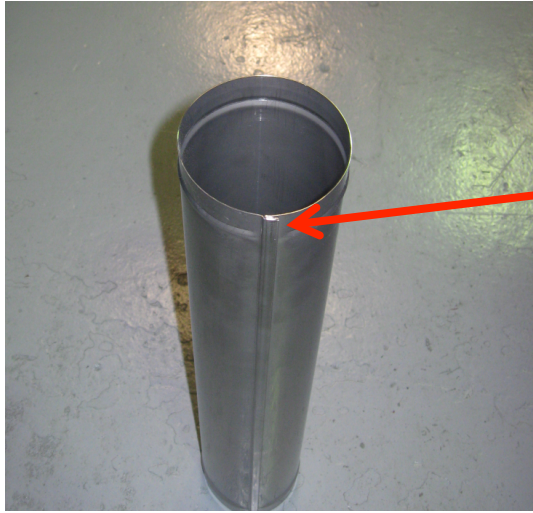


Fig. 10

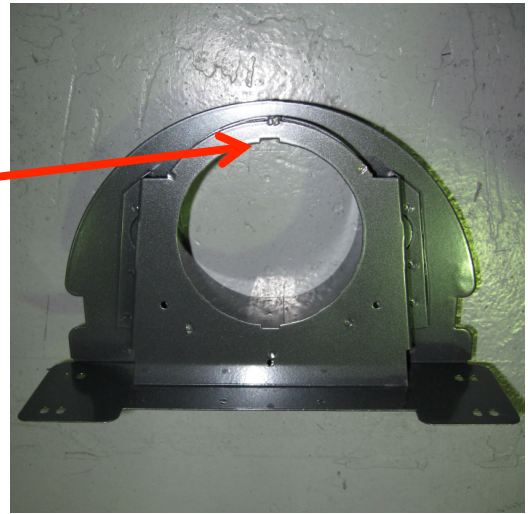


Fig. 11

12. Fill the void between the flue pipe and the flue outlet with a high temperature rated Silicone. Ensure void is filled completely to the top and smooth off edge with finger. (see fig. 12 & 13)



Fig. 12



Fig. 13

13. Fit flue pipe into heater base casting by pressing into place firmly. Ensure correct alignment of flange to heater. (see fig. 14)



Fig. 14

14. Screw flue outlet into place onto rear of heater. (see fig. 15)

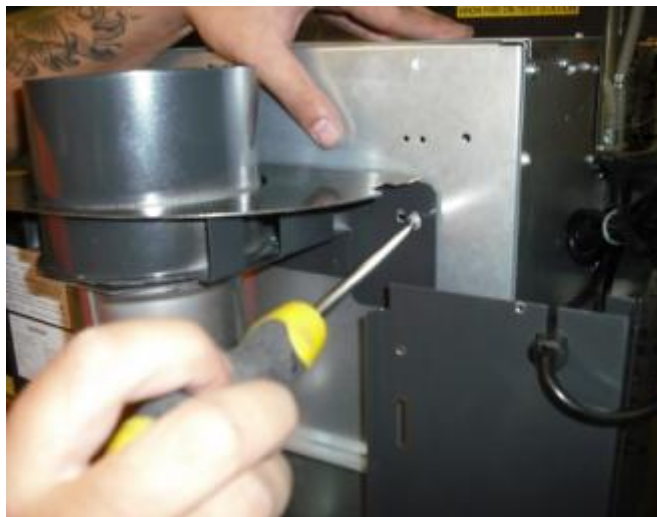


Fig. 15

15. Replace all flue covers, side panels and lid onto heater (reverse of steps 1 – 3)
16. Remove outdoor clearance label and replace with indoor clearance label.
17. Using a permanent marker, black out comment **“For outdoor installation only”** on Viron Heater data label.
18. Proceed with installing flue using instructions supplied with Viron indoor flue kit.

WARRANTY

Your Viron Indoor conversion kit is covered by a limited 3 month warranty against defective parts and faulty workmanship (plus 30 days to allow for installation).

To make a warranty claim you must return your Viron Indoor conversion kit to Astral Pool's factory freight prepaid and Astral Pool will repair or replace it (at its option) and return it to you.

Should a fault occur, call Astral Pool or an Authorised Hurlcon Service Agent. There are no user serviceable parts. Always turn off and disconnect power supply when removing Power Supply Module.

Limitations

All warranties only apply if the equipment is installed and operated in complete compliance with the installation and operating instructions.

No person is authorised to make any representations on behalf of Astral Pool.

**ASTRALPOOL** **INST280****ASTRALPOOL** **Melbourne**

39-45 Cyber Loop
Dandenong VIC 3175
P: 03 8796 8600

Townsville

17 Auscan Crescent
Garbutt QLD 4814
P: 07 4796 0100

Sydney Seven Hills

2/2 Welder Road
Seven Hills NSW 2147
P: 02 9853 2100

Sydney Moorebank

6/30 Heathcote Road
Moorebank NSW 2170
P: 02 8778 9500

Adelaide

13 William Street
Mile End South SA 5031
P: 08 8152 7600

Brisbane

1/27 Millenium Place
Tingalpa QLD 4173
P: 07 3308 5400

Perth

97 Sheffield Road
Welshpool WA 6106
P: 08 9350 2600

Gold Coast

1/28 Export Drive
Molendinar QLD 4214
P: 07 5552 2600

sales@astralpool.com.au
www.astralpool.com.au