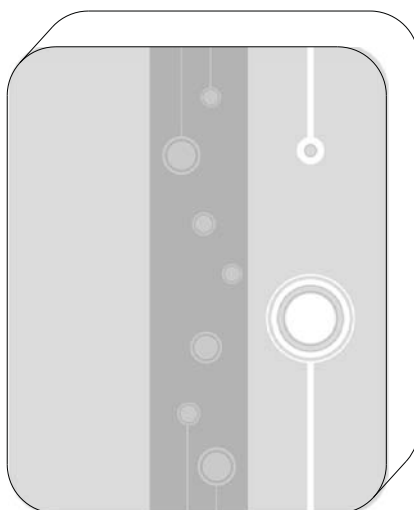




Heat Pump WiFi Module



WiFi MODULE CONTROLLER

Keep your Inverter Pool Heat Pump in hand
For iHP120/iHP170/iHP195/iHP242/iHP238

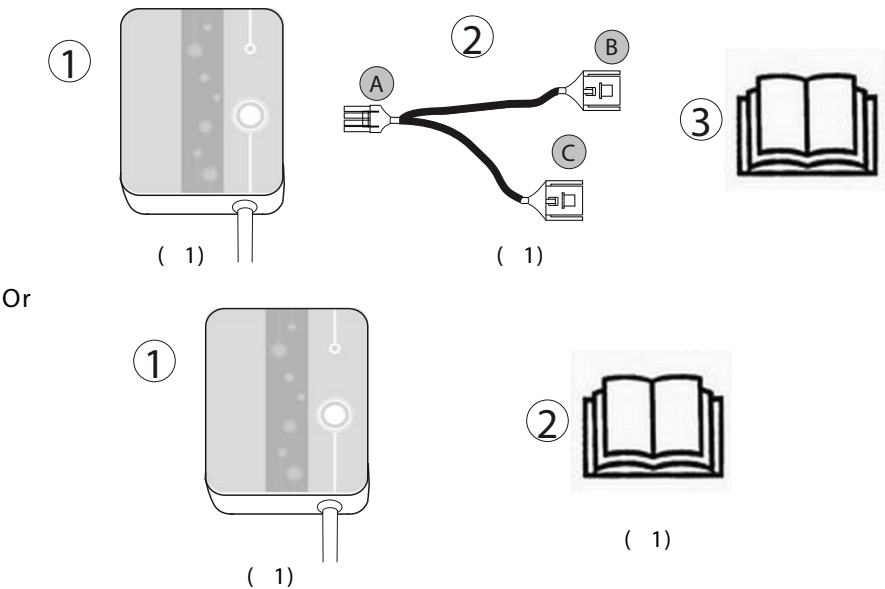
CONTENT

1 The brief introduction of WIFI module	1
1.1 Spare parts of WiFi module	1
1.2 Description of the WIFI controlling	1
2 The installation of WIFI module	2
2.1 Opening the heat pump	2
2.2 Connection	2
2.3 Reinstall	3
3 The using of WIFI module	3
3.1 Wifi module work	3
3.2 Download the APP	4
3.3 Register	5
3.4 Configuration	6
4 Operation and use of APP	8
4.1 The meaning of main icon	8
4.2 Main Function	9
4.3 Other Function	14
5 FAQ	15

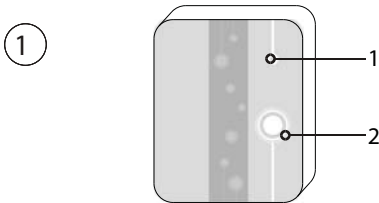
Operation and Use

1 The brief introduction of WIFI module

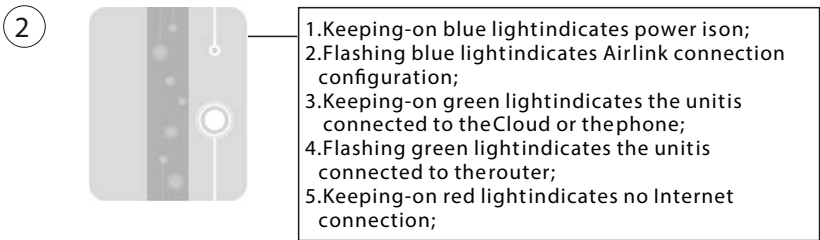
1.1 Contents of the accessory pack



1.2 Description of the WIFI module controlling

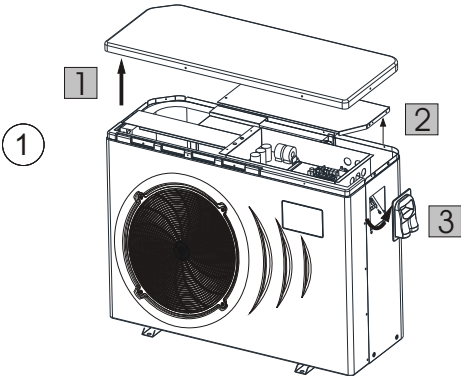


1	LED lights(on= green)
2	Network configuration button

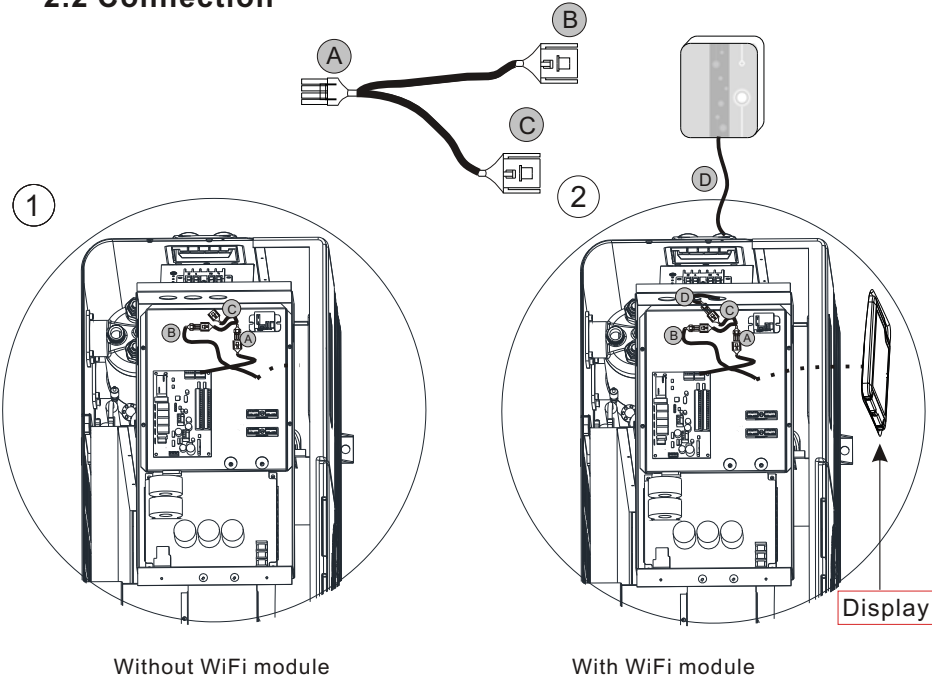


2 The installation of WIFI module

2.1 Opening the heat pump

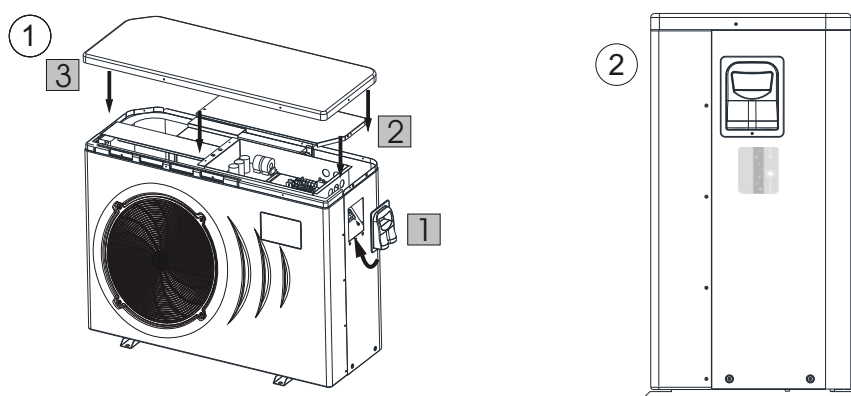


2.2 Connection



Operation and Use

2.3 Reinstall

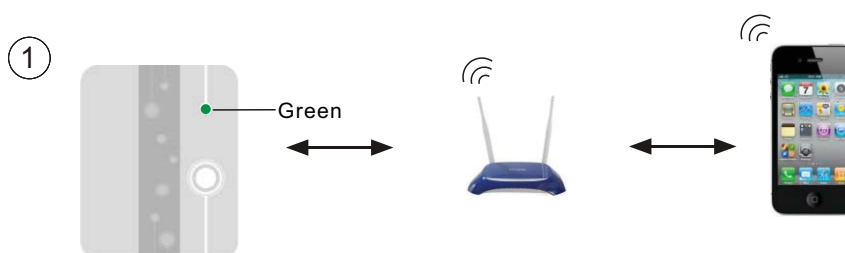


3 The using of WIFI module

3.1 Wifi module work



You need to prepare intelligent terminals (such as mobile devices), networks (such as routers), than you can achieve remote control. Connections are as follows:



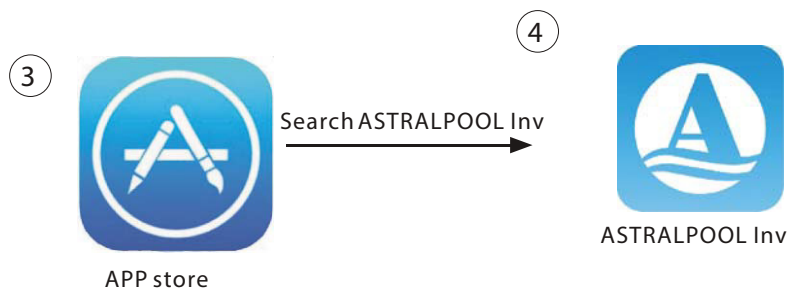
Operation and Use

3.2 Download the APP

For the Android version: Search `ASTRALPOOL Inv` in the Google play,download it and then install it.

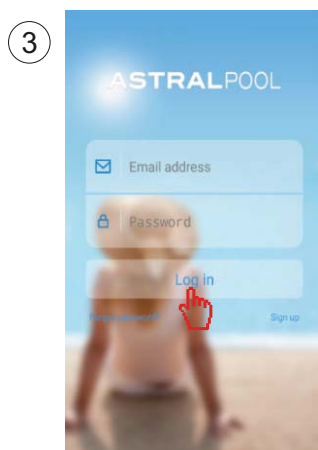
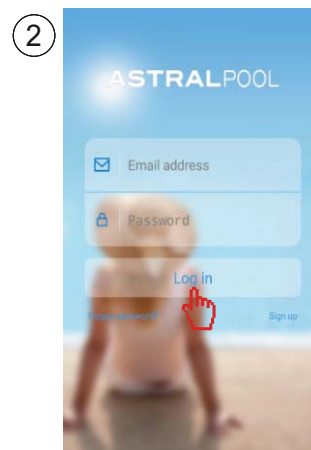
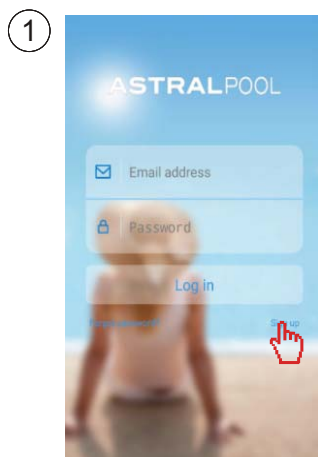


For the IOS version: Search `ASTRALPOOL Inv` in the APP store,download it and then install it.



Operation and Use

3.3 Register



Operation and Use

3.4 Configuration of WIFI module

Note:Confirm the APP has been connected to the valid WIFI

input the correct password,
then press to next step

①

1. Please enter Wi-Fi password. And then press the right arrow.

Press the button of WIFI module
as below picture

②

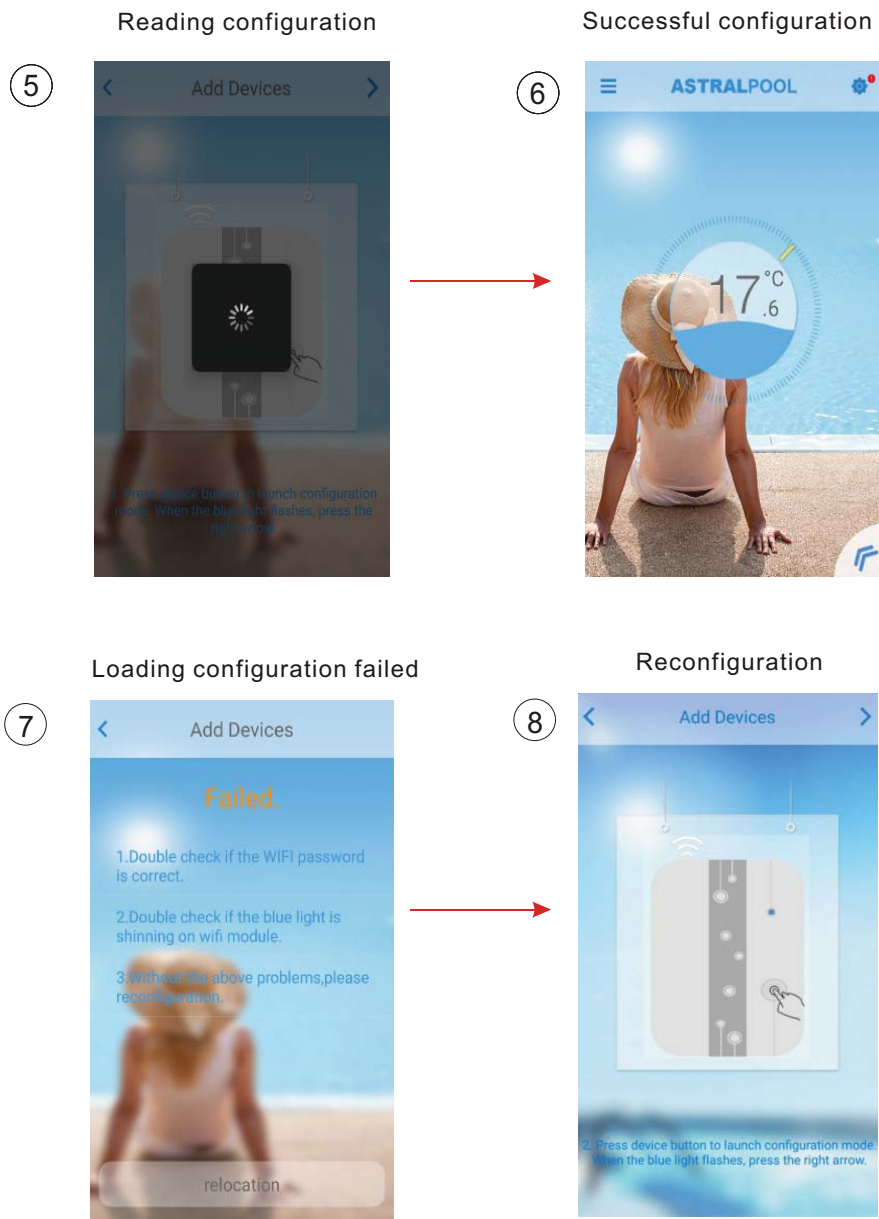
After press the button,
the light will be blue

③

④

Note:On WIFI module

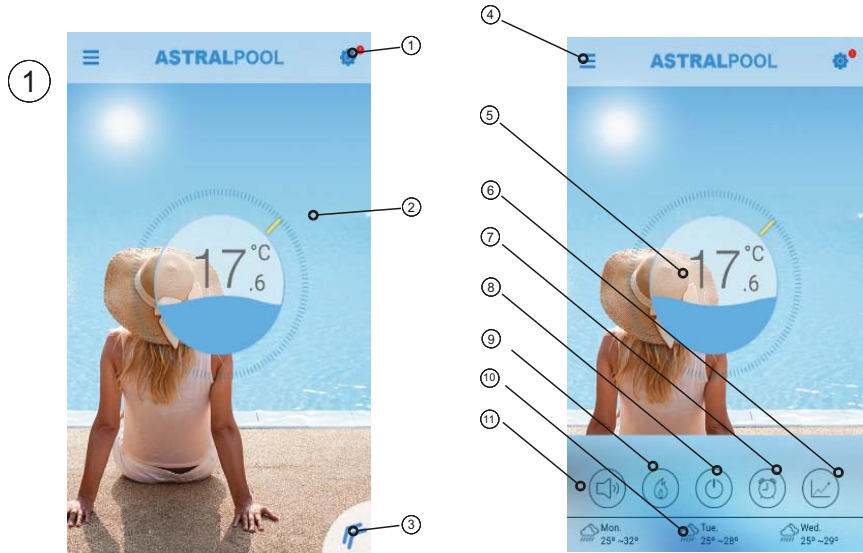
Operation and Use



Operation and Use





4 Operation and Application of APP

4.1 The main icon and function



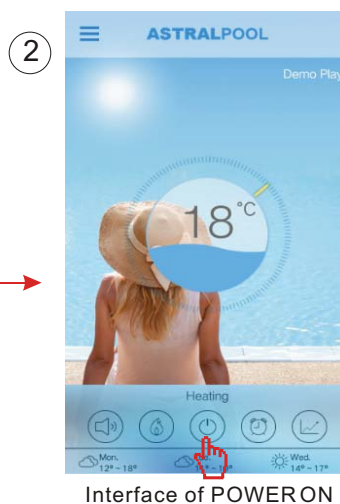
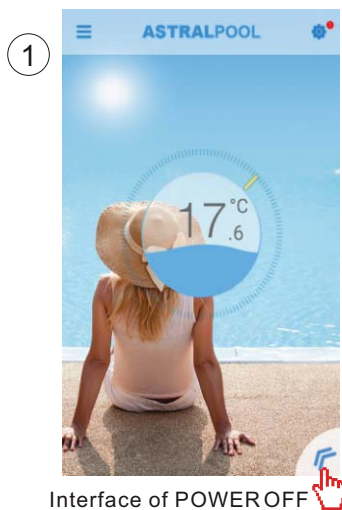
NO.	ICON	NAME	FUNCTIONS
①		Setting	Press to set the software.(see page.14)
②		Target temp. Pointer	Press and hold to slide and adjust target temperature(see page.11)
③		Menu button	Press the menu button, it will show the function list.
④		Device list	Device list, pressit and goes to deveice list.
⑤		Status Display	The number show the current pool water temper-ature .Ripple on behalf of the machine switch.
⑥		Temperature curve	Press to show the temperature curve about latest temperature record in a month.(see page.13).
⑦		timer	Click it to enter the timer on/off and mute timer setting interface(see page.11).

Operation and Use

⑧		On/off button	Press to control the on/off state of the unit.
⑨		Mode shift	Click it to shift running mode of equipment among three modes: Cooling, heating and Auto. The cooling mode does not display this icon. (see page.10.)
⑩		Weather	Display the weather in three days
⑪		Mute conversion	Click it to shift running mode of equipment among two modes: mute and un-mute (see page.12)

4.2 Main Function

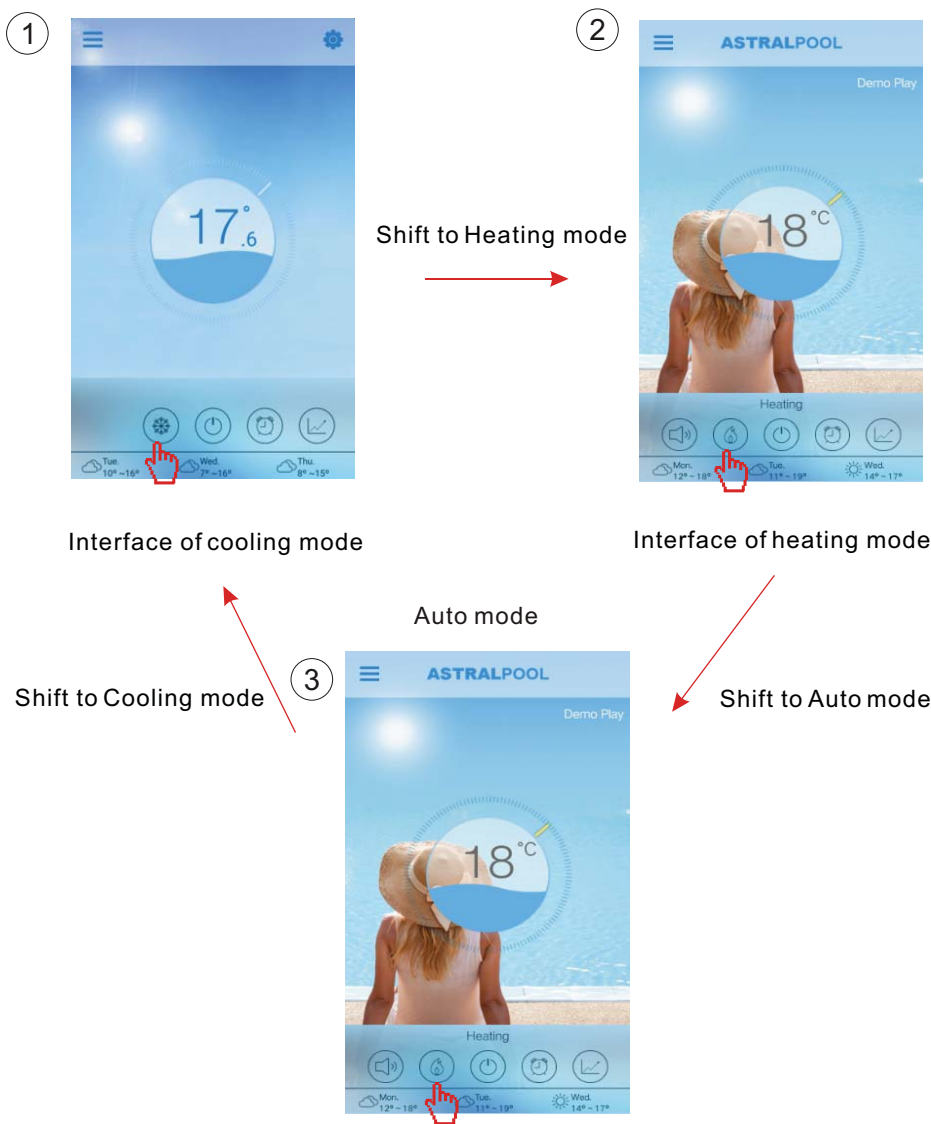
4.2.1 Turn ON/OFF



Operation and Use

4.2.2 Modes shifting

Click the “Mode shift” icon to shift running mode of equipment.
The sequence of shifting is “Cooling→Heating→Auto” and that cycle repeats.



Operation and Use

4.2.3 Setting the temperature

Hold the cursor slide to change the temperature

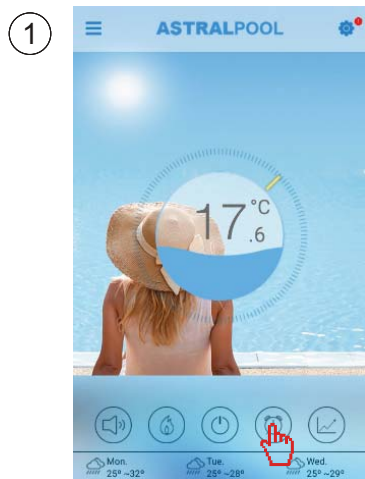


Complete the setting of target temp.

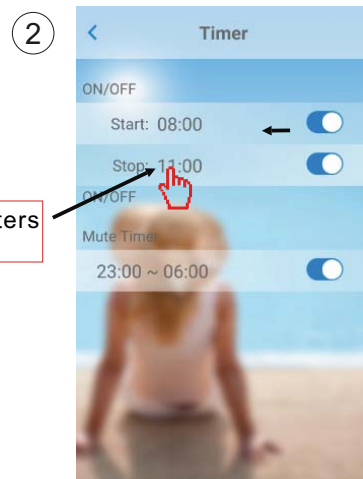


4.2.4 Timer setting

- (1) Click "Timer" icon to enter the timer setting interface.
- (2) Click "<" to return to previous interface.
- (3) 2 independent groups of timer are provided for setting.

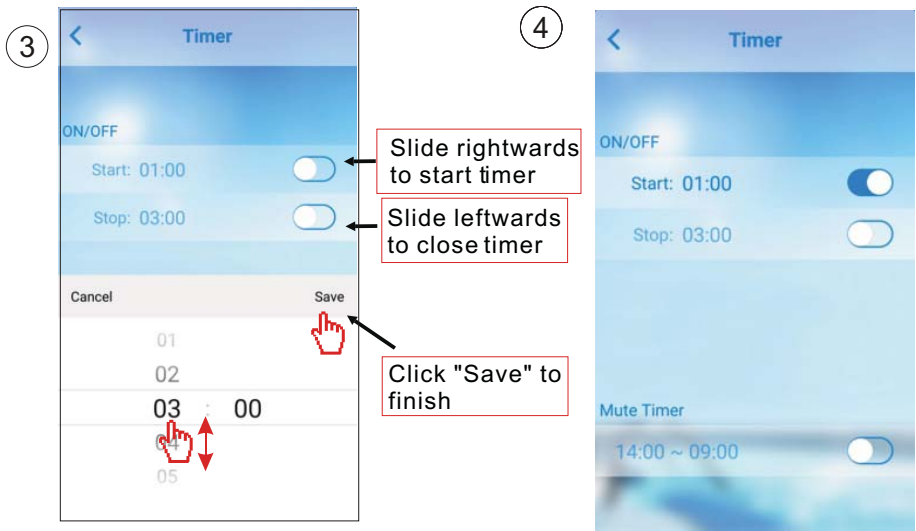


Click characters to set timer



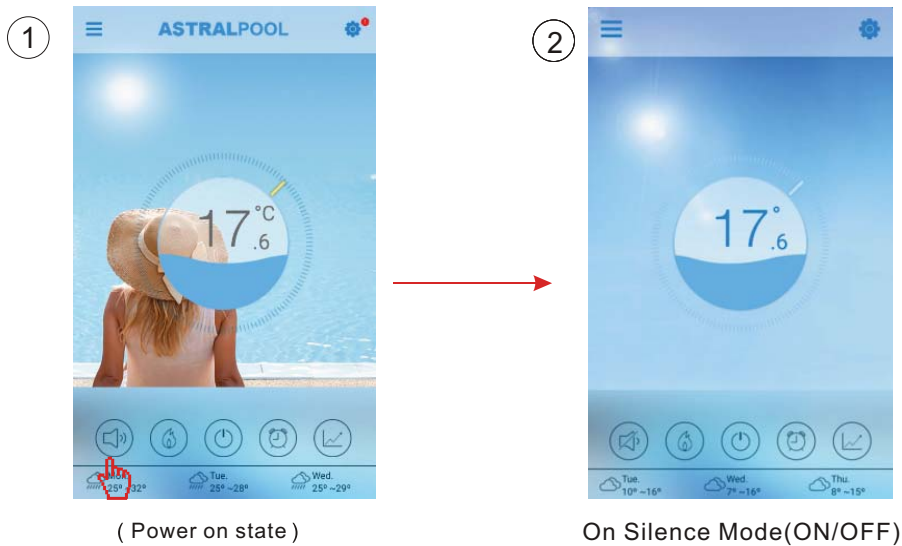
Operation and Use

Save it after setting



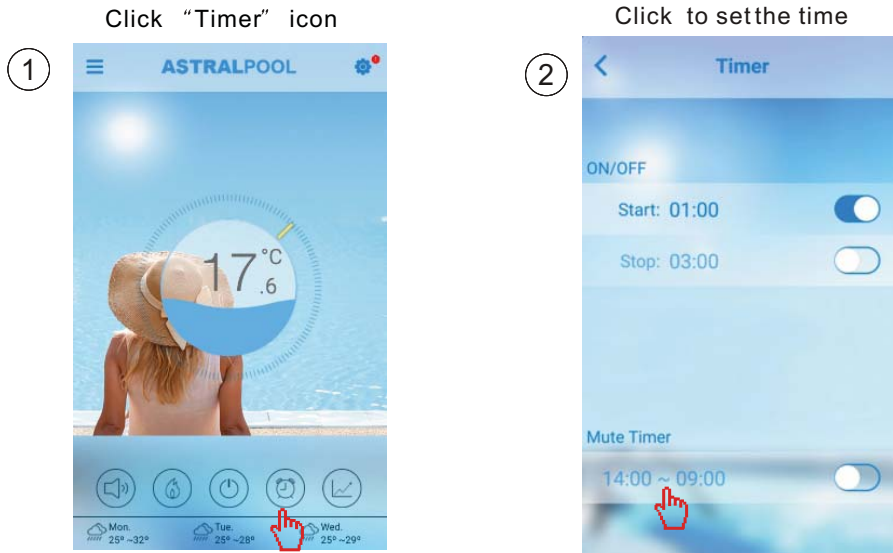
4.2.5 Silence Mode

Click “mute” icon to shift the Silence Mode(ON/OFF).



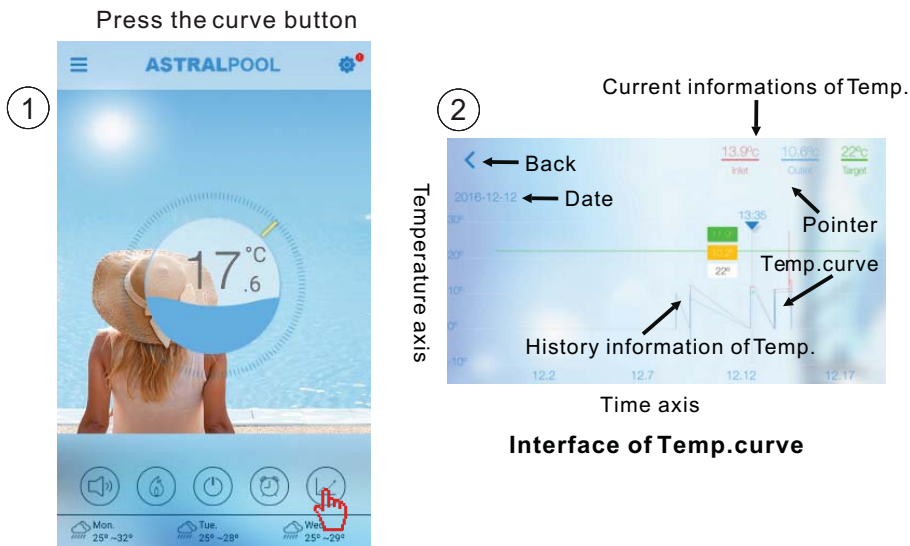
Operation and Use

4.2.6 Timing mute



4.2.7 Check the Temp.curve

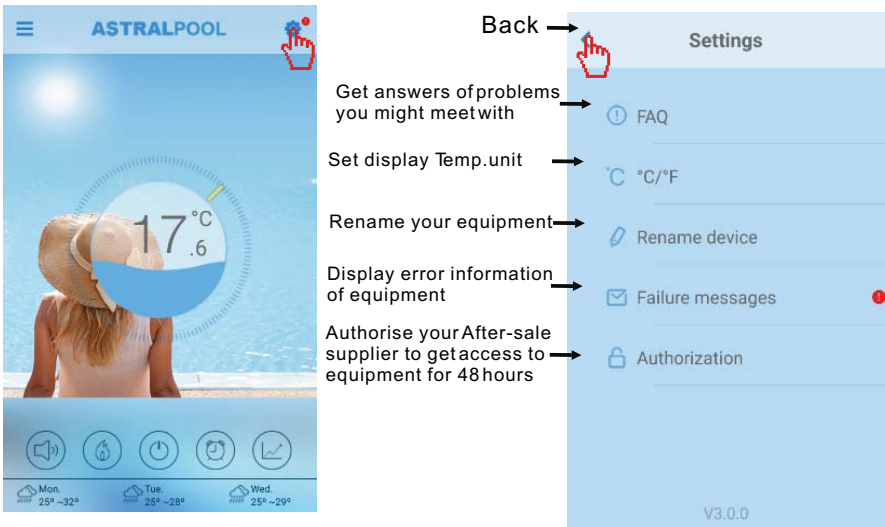
- You can get current or history (up to past 30 days) information of variation of temperature by easily sliding the pointer.
- With two fingers you can zoom in/out the Temp.curve.



Operation and Use

4.3 Other Function

Click “Settings” icon to enter the interface of settings.

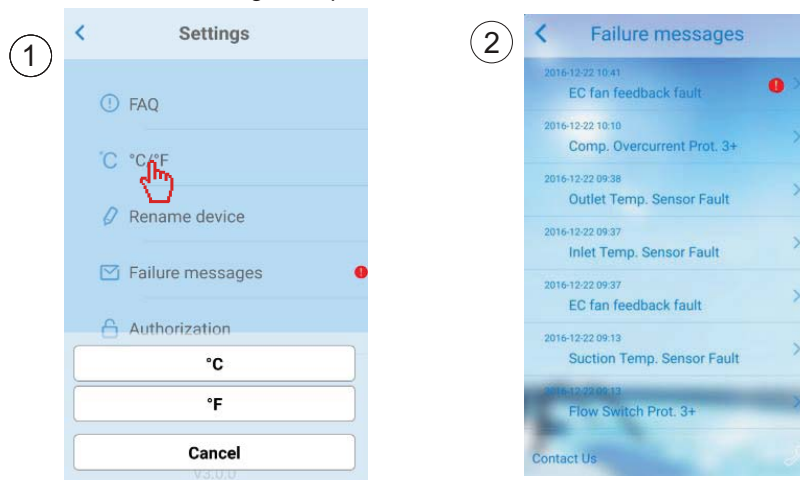


FAQ	ANSWER
Internet Access successful:	Green light
How to fix a connection issue due to a too big distance between my Home router and the WiFi module.	(1) Use a 10m extension cable, please contact your dealer. (2) Use a Wi-Fi range extender WiFi (not supplied).

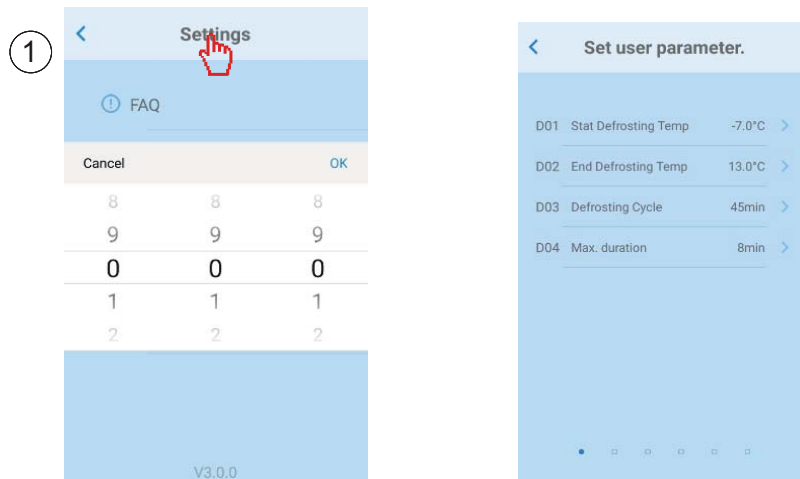
Operation and Use

Check the Failure Information of heat pump

Click to change temp. Unit

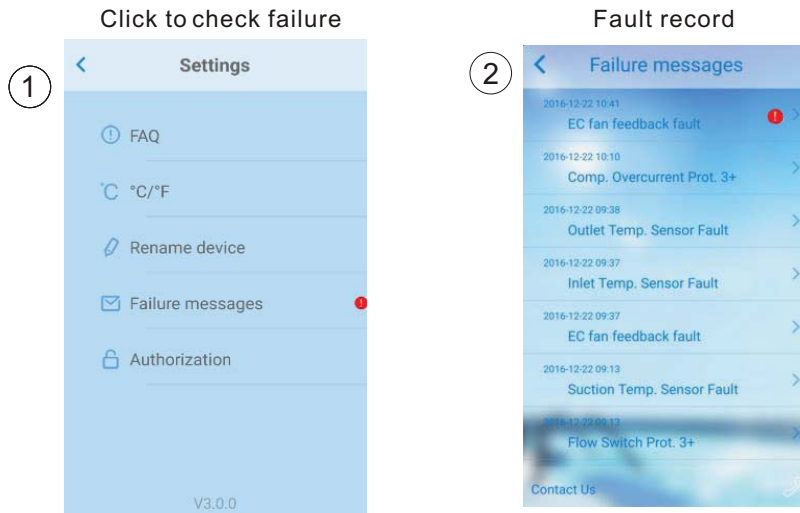


Click settings to 10 seconds get into parameter checking,
password is 022



**Note: If you want to get into factory parameter setting,
please get the password from your supplier**

Operation and Use



Note: If the machine fails, please clear the fault promptly.

5.FAQ

5.1 when the APP can not connect the device, it shows "Failed to connect to device"

Answer: The network is abnormal, please check your network.

5.2 when the APP can not connect the device, it shows "Device offline"

Answer: The wifi module is dropped, please check the connection of the WIFI module, or restart and connect the module again

5.3 The distance between my device and router is too long which results in a signal instability.

Try to add another router between the original router and the equipment in order to relay signal.

5.4 Something goes wrong with my equipment, what should I do?

- (1) Check error message in Setting (see page.20) or displayed in wire controller.
- (2) Look up corresponding error code in the instruction of your equipment to find out the problem.
- (3) Contact your supplier for after-sales maintenance if necessary.



sales@astralpool.com.au
www.astralpool.com.au